

Contemporary Art & Design Exhibition

# THE OVERVIEW EFFECT

11-14 NOV 2021 | LISBON, PORTUGAL

TOE

# ARTISTS

---

EDITION II | NOV. 2021 | LISBON | @ SUSPENSO

AMY ADLER | ANDRE SARAIVA | ANDY WARHOL | ARMAN | ARTHUR DORVAL  
BEN | BLAC DWELLE | BORDALO II | CESAR | CHRYSTIANE CHARLES  
CLEMENT COGITOR | CLEON PETERSON | CRASH | DAIN | DAMIEN  
BENETEAU DAVID LACHAPELLE | DORIAN RIGAL | FELIX AGOSTINI | FINOK |  
FIV3 | FRANÇOISE PETROVITCH | FUTURA 2000 | PHILIPPE HIQUILY | JASON  
REVOK JONONE | QUICK | MARCUS HARVEY | MEHDI CIBILLE | MICHAEL  
WAGNER OBEY | OLIVIER DASSAULT | OS GEMEOS | PETER ZIMMERMAN |  
PIERRE PAUZE | RAMMELLZEE | RETNA | ROBERT COMBAS | TOM  
LELLOUCHE VALERIO ADAMI | VILHS | VINCENT CUISSET | ZEVS



FOR ANY INFORMATION AND PRICE REQUEST  
PLEASE CONTACT US

[sales@the-overview-effect.com](mailto:sales@the-overview-effect.com)

JONATHAN +351 915 792 332 | GEORGES +33 6 62 33 15 15

Price ranges in thousands of euros are indicated  
on each description sheet of the works presented in this catalog



Price under 5k€



Price under 10k€



Price under 25k€



Price under 50k€



Price over 50k€

TOE



DAVID LACHAPELLE

PICKLED TO PERFECTION (1997)

CHROMOGENIC PRINT  
EDITION OF 30  
SIGNED, TITLED, DATED & NUMBERED  
ON THE BACK

70 x 55 x 4 cm





TOE



BORDALO II

LIGHTED PLASTIC BADGER (2021)

PLASTIC, NEON LED LIGHTS AND CONTROLLER

SIGNED

215 x 168 x 40 cm





TOE

VHILS

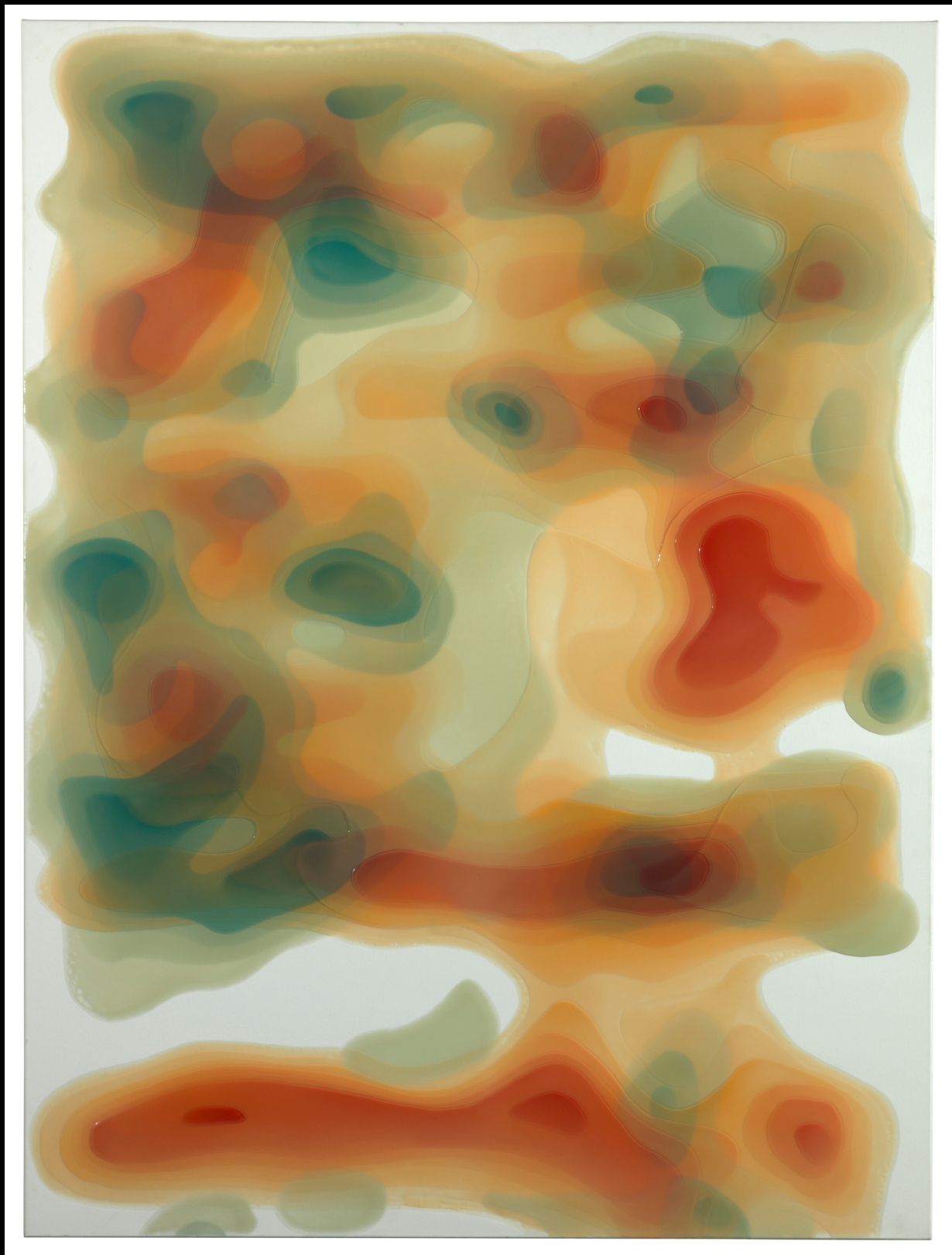
DECAL (2021)

PAPIER MACHÉ AND PAINT  
HAND-FINISHED

EDITION OF 50  
ALL DIFFERENT

100 × 70 cm





TOE

PETER ZIMMERMAN

BOX (2001)  
EPOXY RESIN ON CANVAS

SIGNED, TITLED & DATED ON THE REVERSE

200.4 x 150 cm







TOE

VALERIO ADAMI

THE GUGGENHEIM (1968)

ACRYLIC ON CANVAS, FRAMED  
SIGNED, TITLED AND  
DATED N.Y 9.2.68 ON THE REVERSE

101.6 x 63.2 cm



TOE



DAVID LACHAPELLE

Make over: Surgery series, New York 1997

Color Photograph /30  
Signed, numbered and  
titled by artist on verso

SOLD



T O E



AMY ADLER

WHY WOULD I LIE (1999)

C-PRINT MOUNTED TO SINTRA, IN 6 PARTS  
SIGNED AND DATED 1999 ON THE REVERSE OF PART 6  
EACH INSCRIBED WITH SEQUENCE NUMBER ON THE REVERSE

182.3 x 102 cm (each)



TOE



ARMAN

UNTITLED (1965)  
BULLET CAVITY IN RESIN

24.8 x 10.2 x 10.2 cm





T O E

ARMAN

INCLUSION OF PHONES CUT  
FROM TRANSPARENT RESIN, CIRCA 1985

ARTIST PROOF NUMBERED  
(OUTSIDE THE EDITION OF 100 COPIES)

THIS WORK IS LISTED IN ARMAN STUDIO  
ARCHIVES IN NEW YORK  
UNDER THE NUMBER N°APA#8403.05.025

35.5 x 49 x 5.5 cm





TOE

ARMAN

INCLUSION OF PHONES CUT  
FROM TRANSPARENT RESIN

REFERENCE ARCHIVE DURAND RUEL  
UNIQUE PIECE

74 x 47 x 5 cm





is  
everything  
art?



PRIMA  
MATERIA







T O E

BEN

L'ART EST UN CUL DE SAC

ACRYLIC ON ROAD SIGN

SIGNED ON THE FRONT  
SERIES OF 35, NUMBERED ON THE BACK

39 X 39.5 X 2 CM



T O E



BEN

BUREN

B U R E N

ACRYLIC ON CANVAS AND GLASS VODKA BOTTLES  
SIGNED AND TITLED ON THE BACK

43 X 73.50 X 10CM

Bravez le U et le R  
il restera le pire  
du meilleur.. ?



TOE

OBEY - SHEPARD FAIREY

ICON COLLAGE (Middle)

SILKSCREEN AND MIXES MEDIA COLLAGE ON PAPER, HPM  
EDITION OF 10

88 x 110 x 5 cm



TOE

OBEY - SHEPARD FAIREY

ICON COLLAGE (Top), 2016

SILKSCREEN AND MIXES MEDIA COLLAGE ON PAPER, HPM  
EDITION OF 10

88 x 110 x 5 cm



TOE



MARK RYDEN

PRINT NUMBERED OUT OF 250  
SIGNED

43 x 34.5cm



TOE



ROBERT COMBAS

L'IVRESSE DE NOÉ (1995)

ORIGINAL POLYCHROME ETCHING AND AQUATINT,  
ON VELIN RIVES PAPER 500G PUR CHIFFON  
EDITION OF 100

70 × 90 cm



TOE

ROBERT COMBAS,

LA CHASSE AUX CANARDS (1995)

ORIGINAL POLYCHROME ETCHING AND  
AQUATINT ON VELIN RIVES  
PAPER 500G PUR CHIFFON

COLLAGE OF A PHOTOGRAPH  
MADE BY THE ARTIST

SIGNED AND NUMBERED IN FRONT  
70 x 99 cm





ROBERT COMBAS  
(FRENCH - BORN IN 1957)

TÊTE DE POIRE ET ARTISTE GIVRE (2009)

AQUAGRAVURE EMBOSSED  
ON HANDMADE PAPER  
SIGNED, DATED AND NUMBERED EA /10

57,50 x 75 cm (framed)









TOE

FINOK

FARDO (2014)

OIL AND WOOD ON WOOD SHAPING  
SIGNED ON THE BACK

142 x 181 cm





TOE



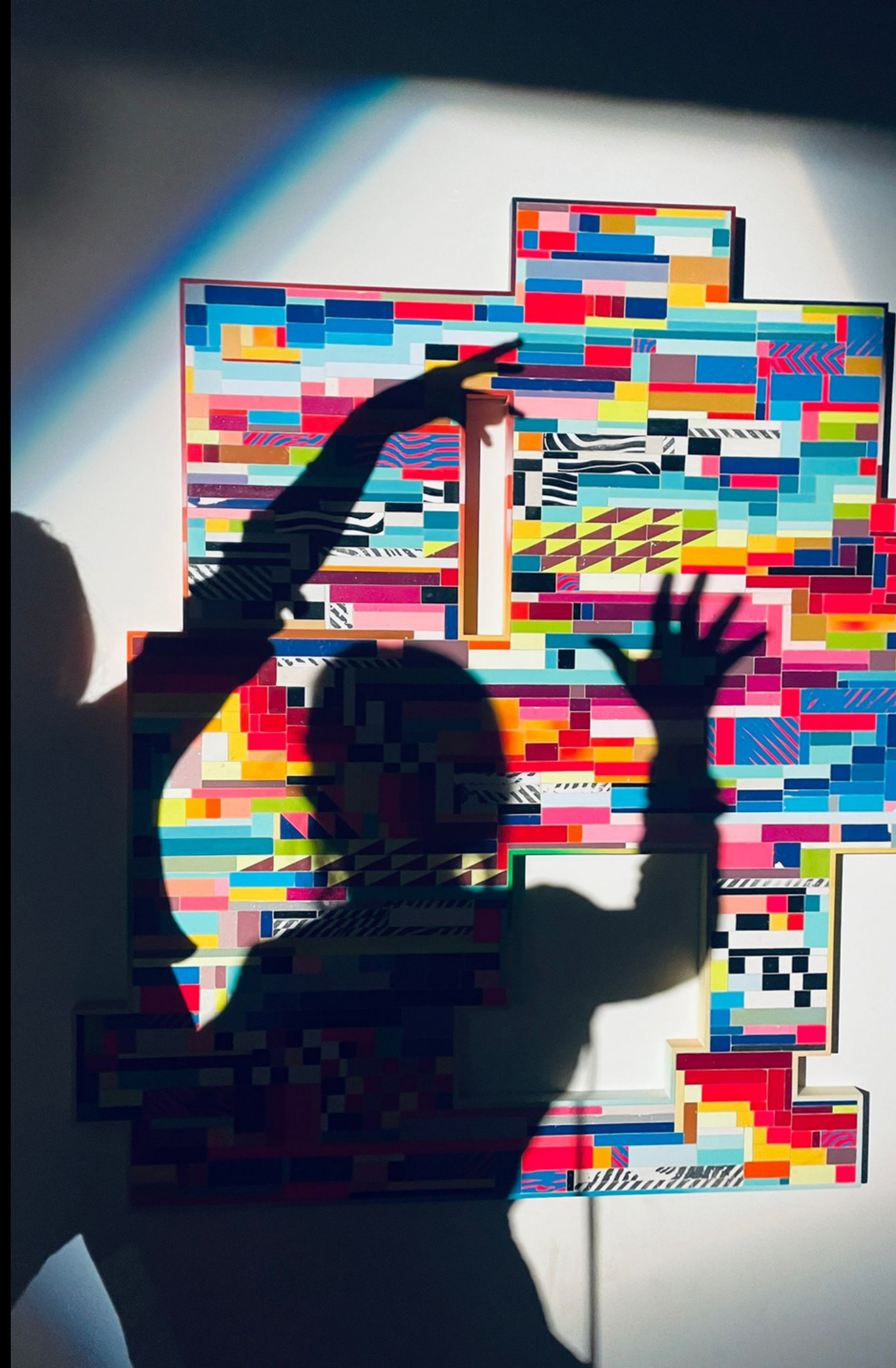
FINOK

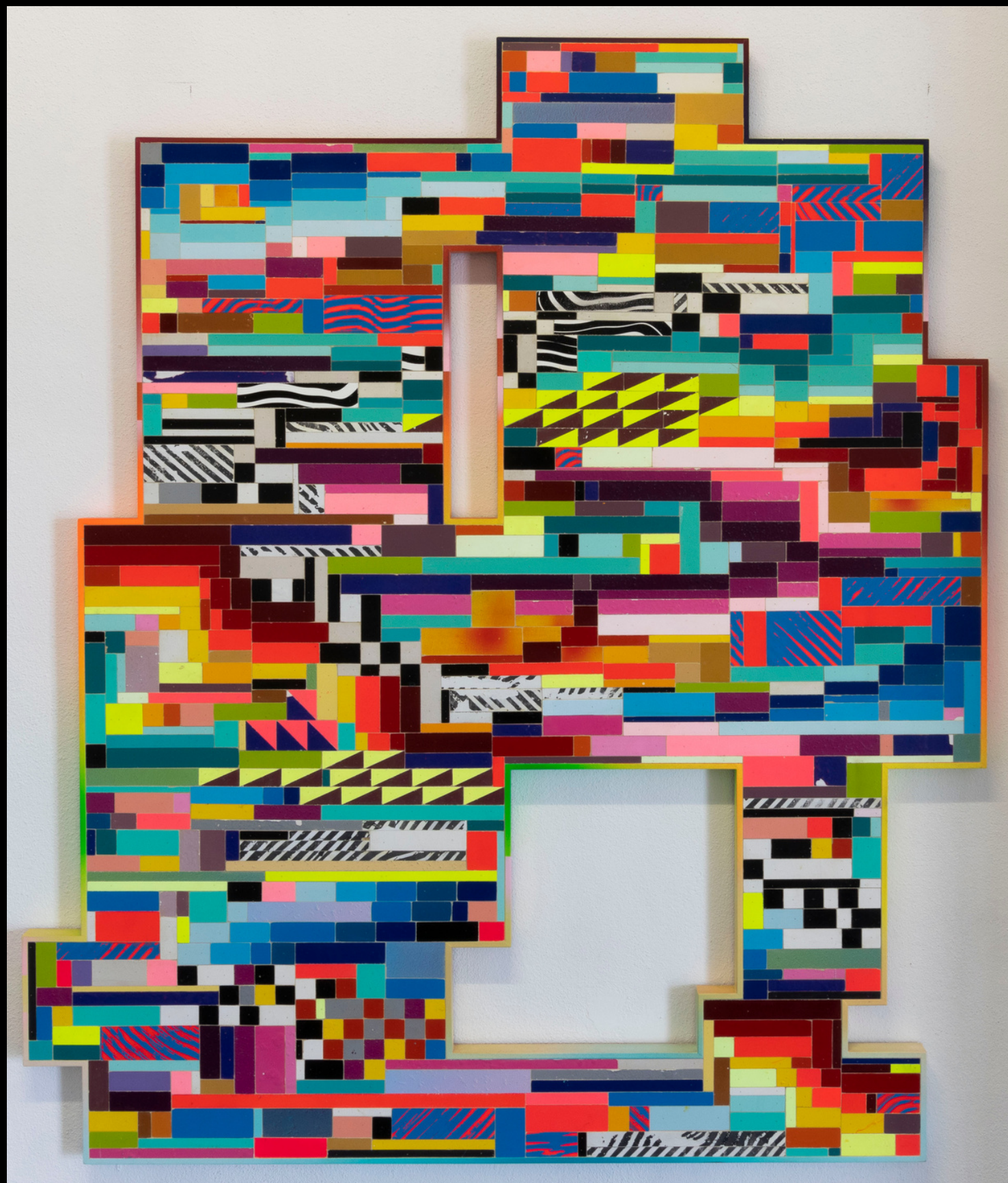
AMARRADO (2014)

OIL AND WOOD ON WOOD SHAPING  
SIGNED ON THE BACK

166 × 136 cm







T O E

JASON REVOK

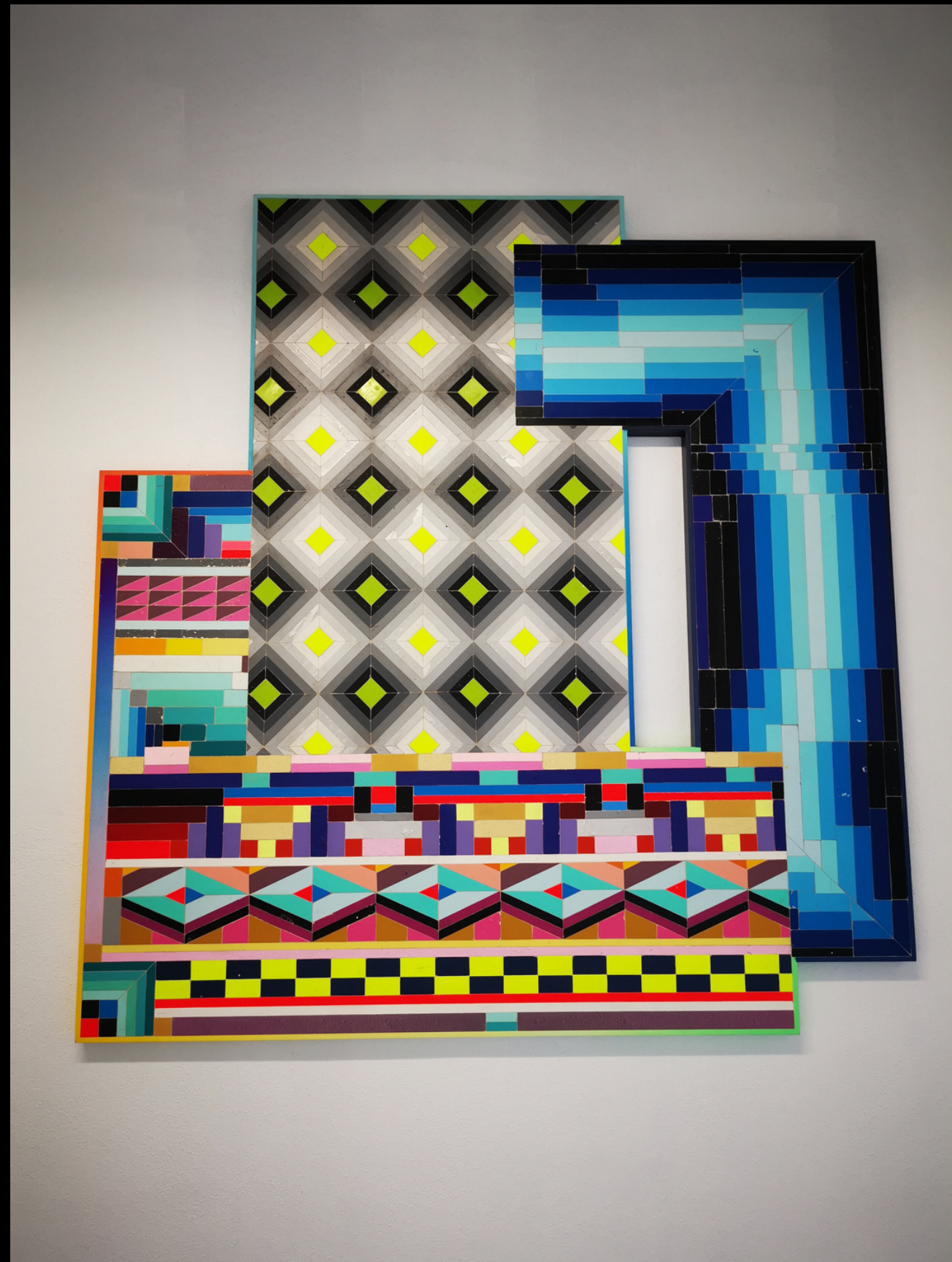
(CORRUPT FILE)\_

OIL ENAMEL AND SYNTHETIC POLYMER  
ON WOOD ASSEMBLAGE

144 x 126 cm



T O E



JASON REVOK

METADATA\_5 (CORRUPT FILE)\_

OIL ENAMEL AND SYNTHETIC POLYMER  
ON WOOD ASSEMBLAGE

131 X 123.5 cm





T O E

DAVID LACHAPELLE

STRIPE-STORY (1995)

CHROMOGENIC PRINT

EDITION OF 30  
SIGNED, TITLED, DATED  
NUMBERED ON THE BACK

61 x 50.8 cm







T O E



OS GEMEOS

2008

acrylic and spray paint on wood panel  
mounted on a patterned glass door

191 x 82 cm







T O E

MARCUS HARVEY

DOG N' BONE, 1998

OIL ON CANVAS

213.3 x 213.3 cm







T O E

MARCUS HARVEY

EXPLODING LILLY, 1998

OIL ON CANVAS

213.3 x 213.3 cm



T O E

RETNA



SAY MY NAME - SO YOU CAN SEE ME  
(DIPTYCH), 2016

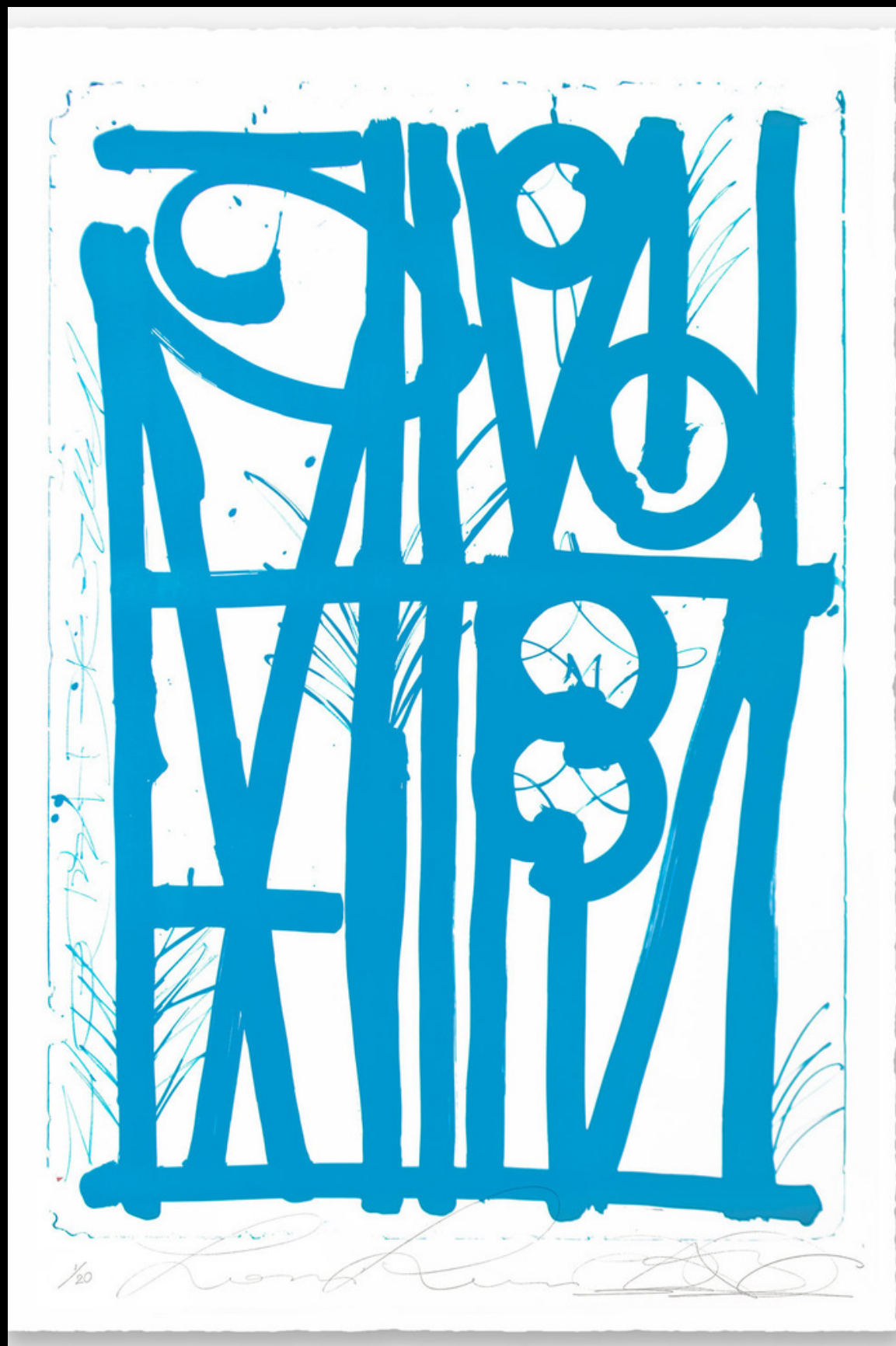
LITHOGRAPHIC 1 COLOR  
PRINTED WITH MARINONI PRESS

DIAMOND DUST ADDED BY HAND  
EDITION OF 99

SIGNED, TITLED, DATED  
NUMBERED ON THE FRONT

110.1 x 90.9 cm each





TOE

RETNA

LUDAVICO & LUDOVICO (2018)  
BLUE EDITION

LITHOGRAPHIC 1 COLOR  
PRINTED WITH MARINONI PRESS

EDITION OF 20

125 x 90 cm







T O E

ANDY WARHOL

PORTRAIT OF JEAN COCTEAU, 1983

SILKSCREEN AND ACRYLIC ON PAPER  
REGISTERED IN THE ARCHIVES OF THE FOUNDATION  
AND STAMPED ON THE BACK

UNIQUE PIECE

81 x 58 cm





TOE



BORDALO II

SEGHI RAT (CIRCA 2011)

PLASTIC, WOOD AND OTHER WASTE  
ACRYLIC AND AEROSOL CANS  
ON WOOD PANELS

SIGNED ON THE FRONT  
H.250 x L.380 x 120cm



TOE



SCOTT CAMPBELL

UNIQUE PIECES  
LASER CUT DOLLAR BILL SHEET

64 x 71cm



TOE

CRASH

PROFILE (1996)

SCREEN PRINT IN COLORS ON ALUMINIUM  
AP 3/3

SIGNED & DATED ON THE FRONT  
ANOTED & NUMBERED ON THE BACK

71.1 x 71.1 x 7.6 cm





TOE

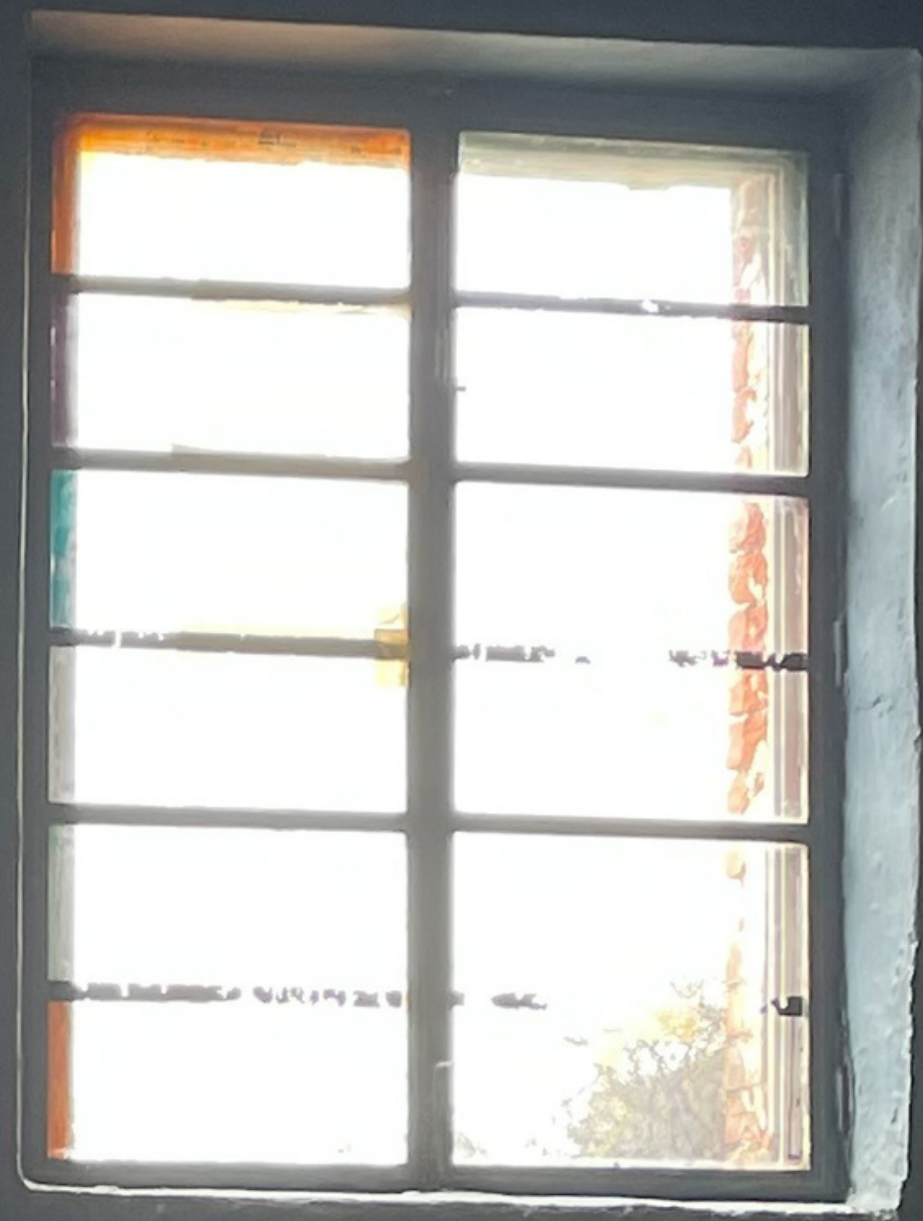
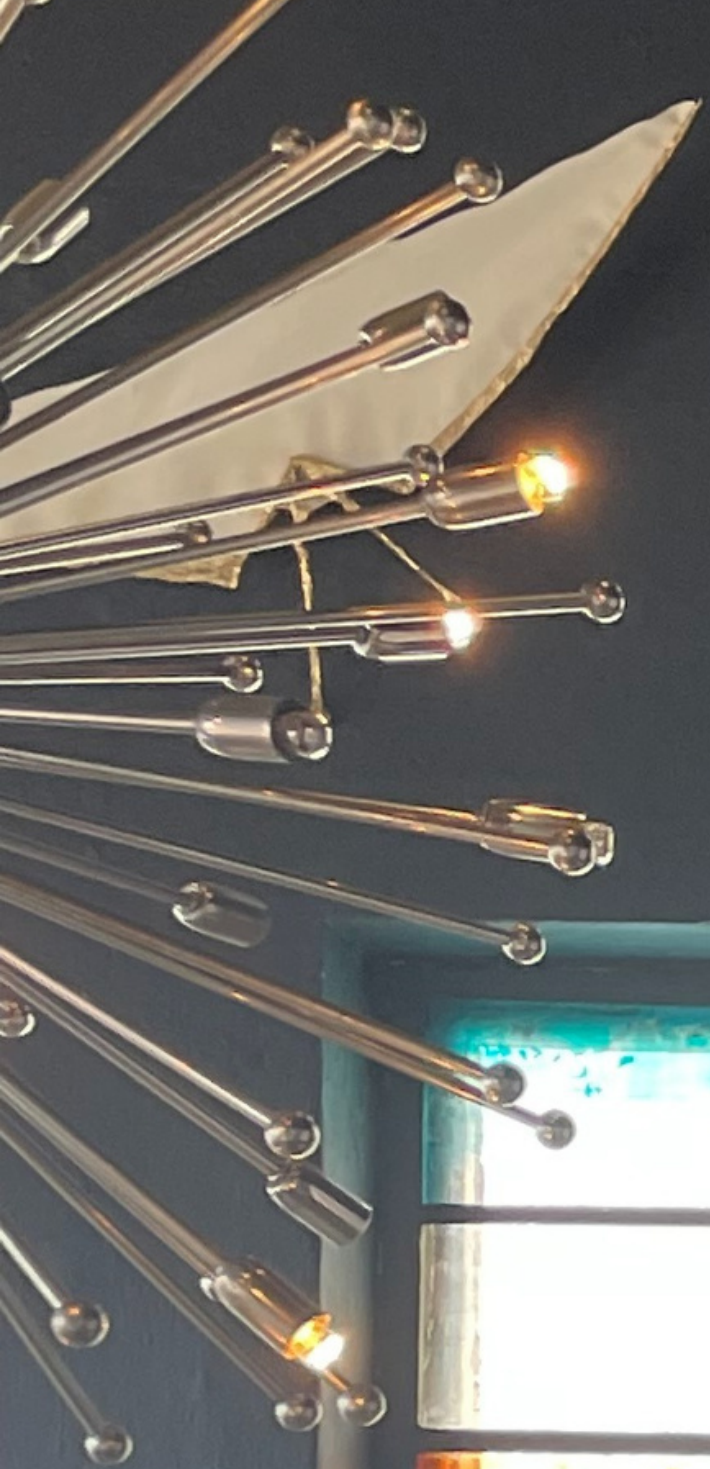


L'ATLAS X ARTHUR DORVAL #2  
CUBE FLASH / BLACK OFFSHORE (2021)

AÉROSOL / ACRYLIQUE

120 x 120 cm









T O E

ARTHUR DORVAL

PYRAMIDES FLASH / BLACK OFFSHORE (2021)

ACRYLIQUE

140 x 100 cm





T O E

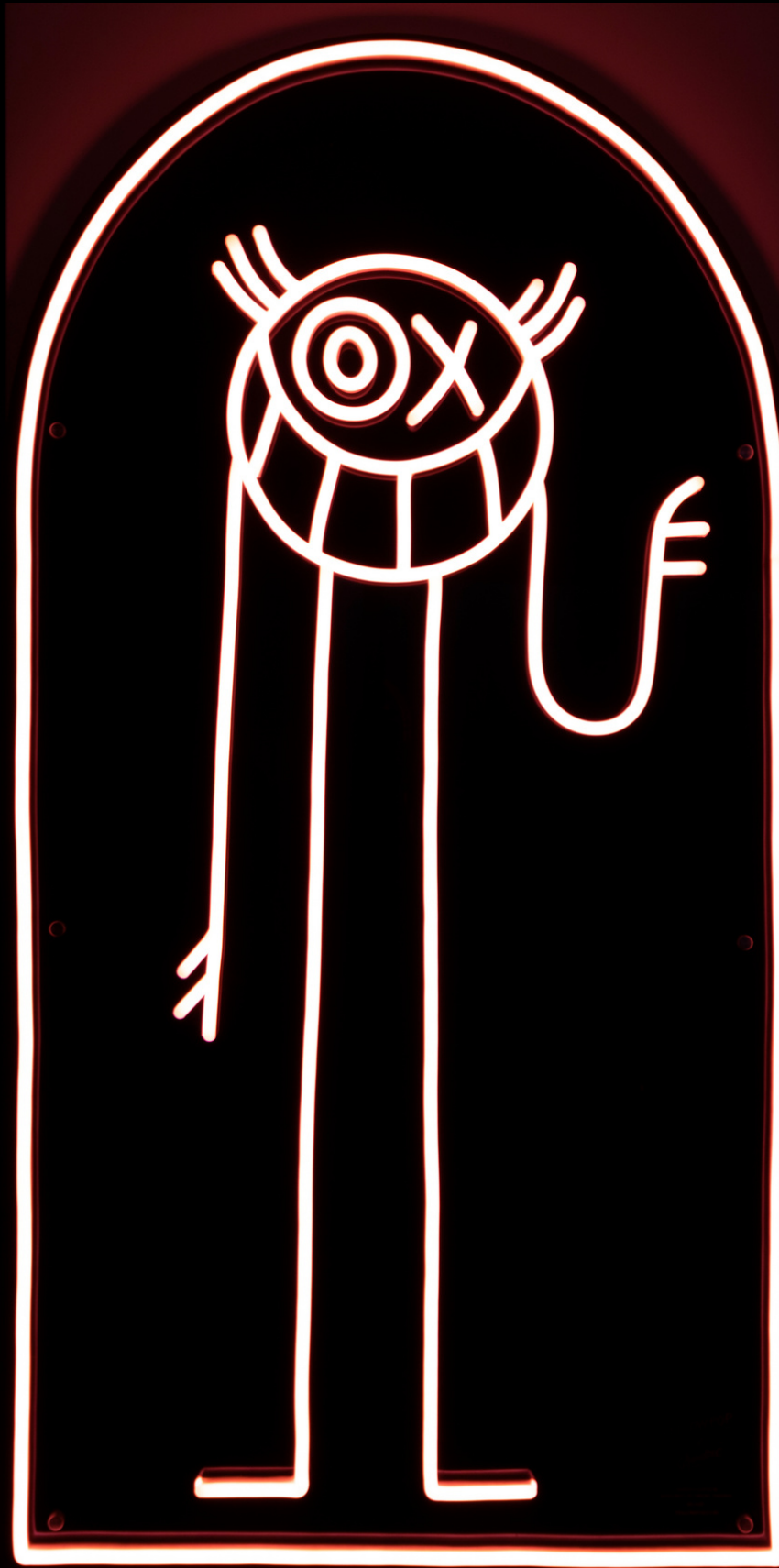
ANDRÉ SARAIVA

HELLO MISTER A (2020)

NEON ON PLEXIGLASS PANEL

EDITION OF 100 EX

63 x 123 cm



T O E

FUTURA 2000

MAGMA 3 (2018)

ACRYLIQUE AND AEROSOL ON CANVAS  
SIGNED ON THE BACK

191 x 96 cm



TOE

SWOON

DAWN & GEMMA

STENCIL, ACRYLIC, PAPER CUT  
AND PAINTED ON WOOD

91 x 181 cm





T O E

PRO176

CARMEN (2014)  
ACRYLIC AND AEROSOL ON CANVAS  
SIGNED ON THE FRONT

134,5 x 103 cm





TOE

ROBERT COMBAS

L'HOMME ANIMAL (1992)

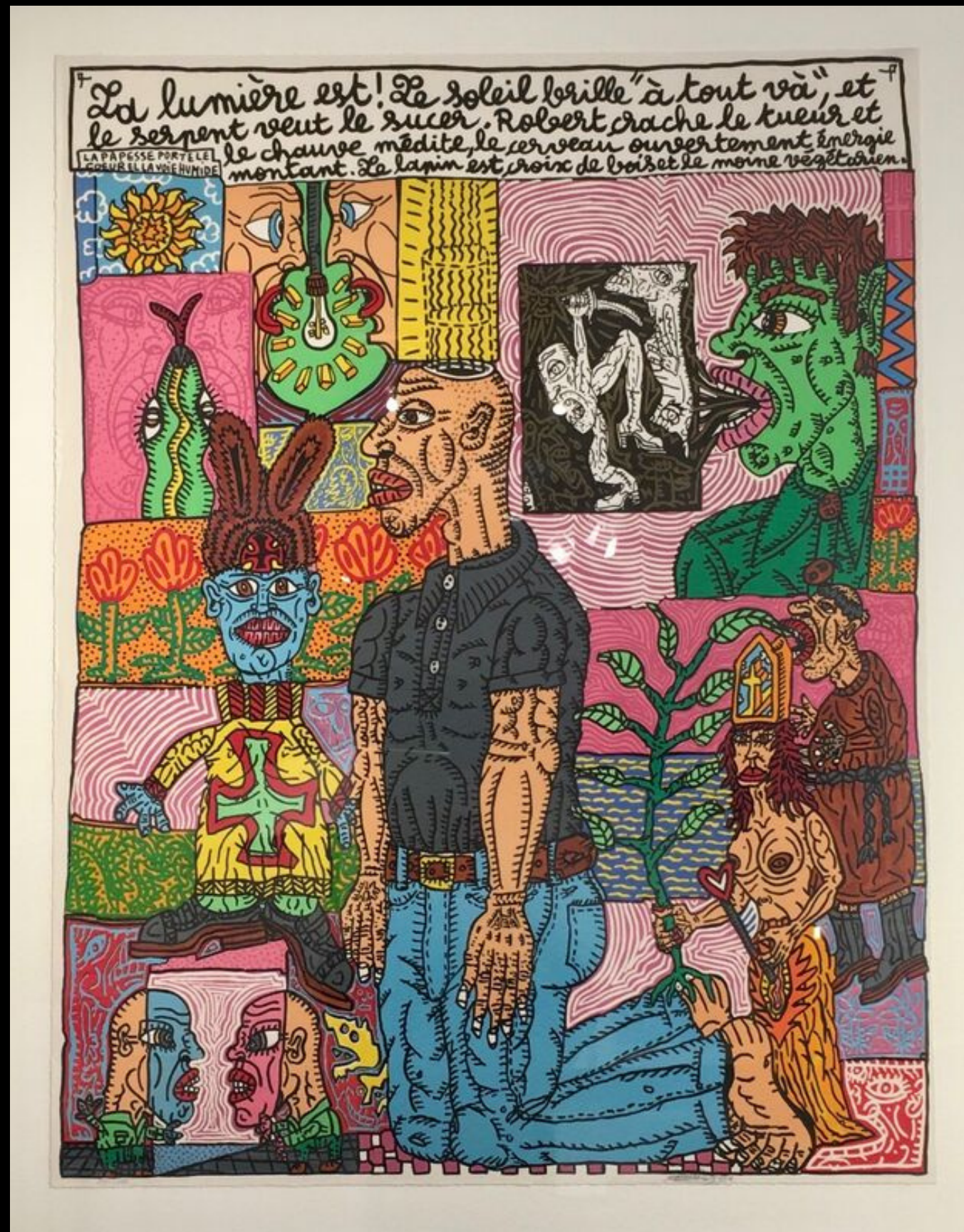
LITHOGRAPHIC 12 COLORS  
PRINTED WITH MARINONI PRESS

SIGNED, NUMBERED AND DATED ON THE FRONT

111 x 87 cm



TOE



ROBERT COMBAS

LA LUMIÈRE EST (1992)

LITHOGRAPHIC 10 COLORS  
PRINTED WITH MARINONI PRESS

SIGNED, NUMBERED AND DATED ON THE FRONT

110,5 x 84,5 cm









TOE

CURTIS KULIG

CANDY SERIES / NEW YORK CITY (2014)

INK AND ACRYLIQUE ON CANVAS

SIGNED, TITLED AND DATED ON THE BACK

152 x 102 cm



T O E



RICHARD AVEDON

THE BEATLES (1967)

ORIGINAL PRINTING  
70 x 50 cm (each)



IN AUGUST 1967, THE AMERICAN PHOTOGRAPHER RICHARD AVEDON MET WITH THE BEATLES IN THOMPSON HOUSE, LONDON AND TOOK A NUMBER OF PHOTOGRAPHIC PORTRAITS OF THE BAND.

AVEDON USED A NEW SOLARIZATION TECHNIQUE WITH THE PHOTOGRAPHS AND ADORNED THEM WITH PSYCHEDELIC SATURATION EFFECTS.



TOE



MEHDI CIBILLE

BLACK DOT (2011)

ACRYLIC ON HANDCUT WOOD

200 x 200 x 5 cm



T O E



MEHDI CIBILLE

PRIMA MATERIA, SANS TITRE (2014)  
ACRYLIC & SPRAY ON CONVAS

40 x 40 cm





TOE



MEHDI CIBILLE LE MODULE DE ZEER

EQUATION SERIES

LA MAISON DU PEUPLE, CLICHY  
COMPRESSION BOMBE #1 (2014)

AEROSOL ON CANVAS

UNIQUE PIECE

SIGNED, DATED & TITLED ON THE BACK

190 x 190 x 7 cm







TOE

BLAC DWELLE

ADAJ (2021)

ASSORTED PIECES OF WOOD, CUT AND ASSEMBLED,  
DUCOCIN 2K WAX  
(PINE, MAHAGONY, OAK, ASH, RAILROAD TIE)

SIGNED ON THE BACK  
UNIQUE PIECE

95 x 15 x 43,5 cm





T O E

BLAC DWELLE

FICHU (2018)

ASSORTED PIECES OF WOOD, CUT AND ASSEMBLED.  
(MAHAGONY, OAK, TOLA, WENGE AND BEECH)

SIGNED ON THE BACK  
UNIQUE PIECE

38 x 28 x 19 cm



TOE

RERO

NO SELFIE ZONE (2021)

SERIGRAPHY ON MIRROR  
EDITION 50 EX

80 x 50 cm



NO-  
SELFIE  
ZONE



TOE



SWOON

UNTITLED (2019)

ACRILYQUE  
WATERCOLOR COLLAGE ON PAPER

DATED AND SIGNED ON THE FRONT  
UNIQUE PIECE

83 x 76 cm





Photo Kenton Thatcher



CLÉON PETERSON  
(AMERICAN - BORN IN 1973)

THE JUDGMENT (2015)

FIBERGLASS, INDUSTRIAL LACQUER  
UNIQUE PIECE

238 x 172 x 205 cm



TOE

PHILIPPE BONAN

PSYCKOZE (2014)

PIGMENT INKJET PHOTO PRINTING  
EDITION 1/75, SIGNED AND NUMBERED ON THE FRONT

40 x 30 cm



*Psychoze 1/75*

*Philippe Bonan*





T O E

HENRIQUE TORRES PART I

UNTITLED (2009)

INK MARKER ON PAPER  
UNIQUE PIECE

28 x 36 cm







T O E

ARNIE

DER ROBOT EMETH (2021)

3D SCULPTURE RENDER  
METAL COLOR SATIN MAT

EDITION 3/8

SIGNED AND NUMBERED ON LOWER BACK

67 x 39 x 40 cm



T O E



TOE



TOM LELLOUCHE

STEEL, WATER, AQUATIC PLANTS,  
VIDEO PROJECTOR, COMPUTER, SENSORS,  
SOUND CARD

158 x 135 x 135 cm





TOE



PIERRE PAUZE

NEON UNTITLED  
PLEASE LOVE PARTY (2018)

NEON DIFFERENT COLORS ON MIRROR TINTED  
PLEXIGLASS PANEL

95,5 x 130 x 10 cm





TOE



FELIX AGOSTINI

ARCHEOPTERYX

MADE BY CHARLES PARIS  
GOLD FINISH & PARCHEMIN

L.137 cm x H.54 x P.14 cm



T O E



LAURENT CHARLES

METROPOLIS (1984)

MADE BY CHARLES PARIS  
BRASS & CERAMIC

SOLD



TOE



JACQUES ADNET

VINYL RECORD HOLDER  
LEATHER & STEEL



TOE

CHRYSTIANE CHARLES

CHARLESTON

MADE BY CHARLES PARIS  
BRONZE & BRASS

SIGNED  
H.47,5 x L. 25 x W.17 CM



TOE

CHRYSTIANE CHARLES

AJONC

MADE BY CHARLES PARIS  
GOLD VARNISH AND GUN METAL FINISH

SIGNED

H.55 x L.19 cm x P.19 cm



TOE

CHRYSTIANE CHARLES

NIL

MADE BY CHARLES PARIS  
GOLD & GUN METAL FINISH

SIGNED & NUMBERED  
H.62 x L.45 cm x P. 22 cm



TOE

JACQUES CHARLES

OGIVE

MADE BY CHARLES PARIS  
NICKEL FINISH

H.100 x L.23 cm x P. 23 cm





TOE

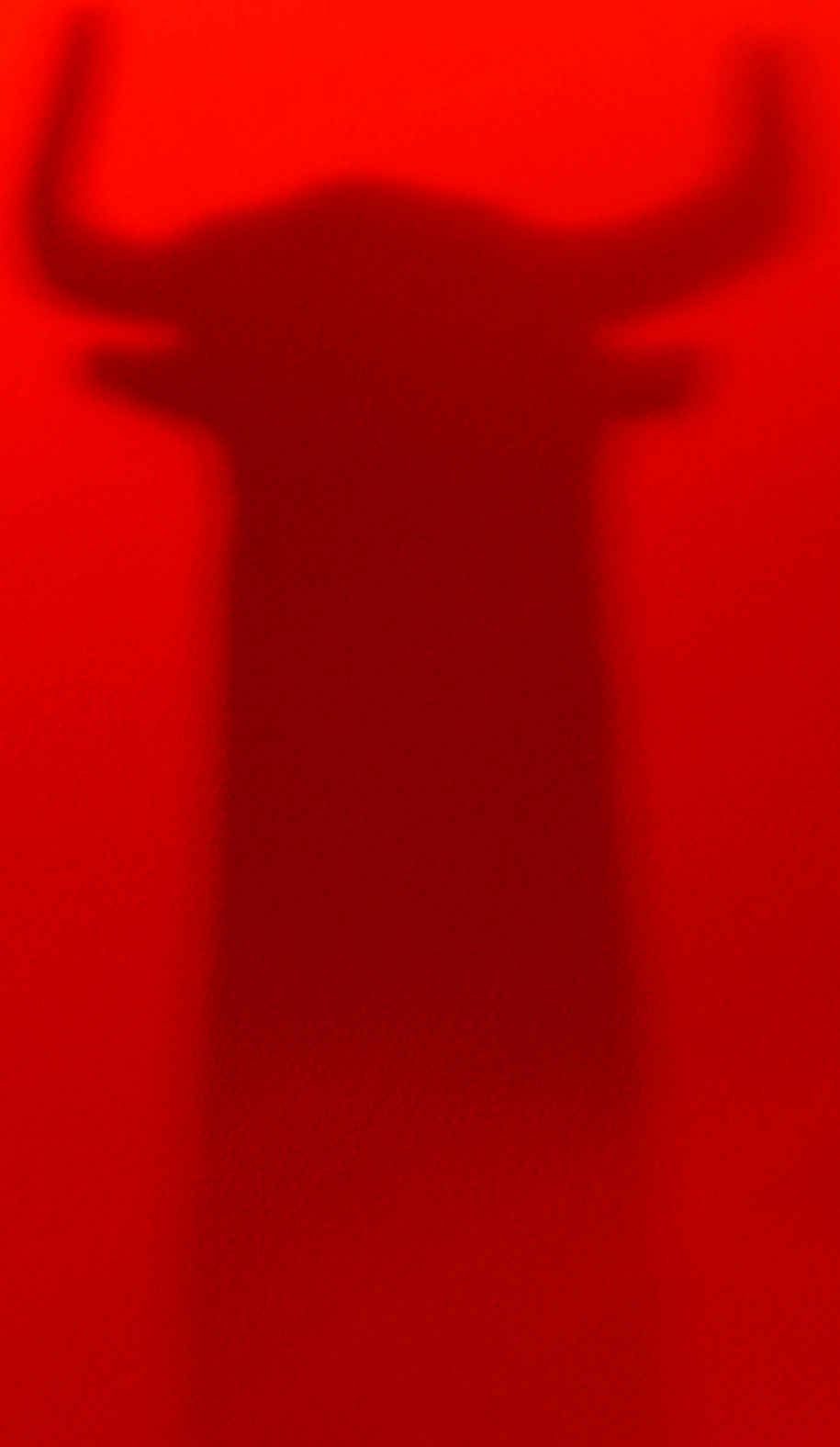
FELIX AGOSTINI

ISPAHAN

MADE BY CHARLES PARIS  
SIGNED & NUMBERED # 11

H.169 x shade: Dia. 49 cm







TOE

FELIX AGOSTINI

TAUREAU

MADE BY CHARLES PARIS  
GOLD FINISH, MADE OF BRONZE  
SIGNED & NUMBERED # 03

H.85 x L.23 x P. 20 cm





TOE



PHILIPPE HIQUILY

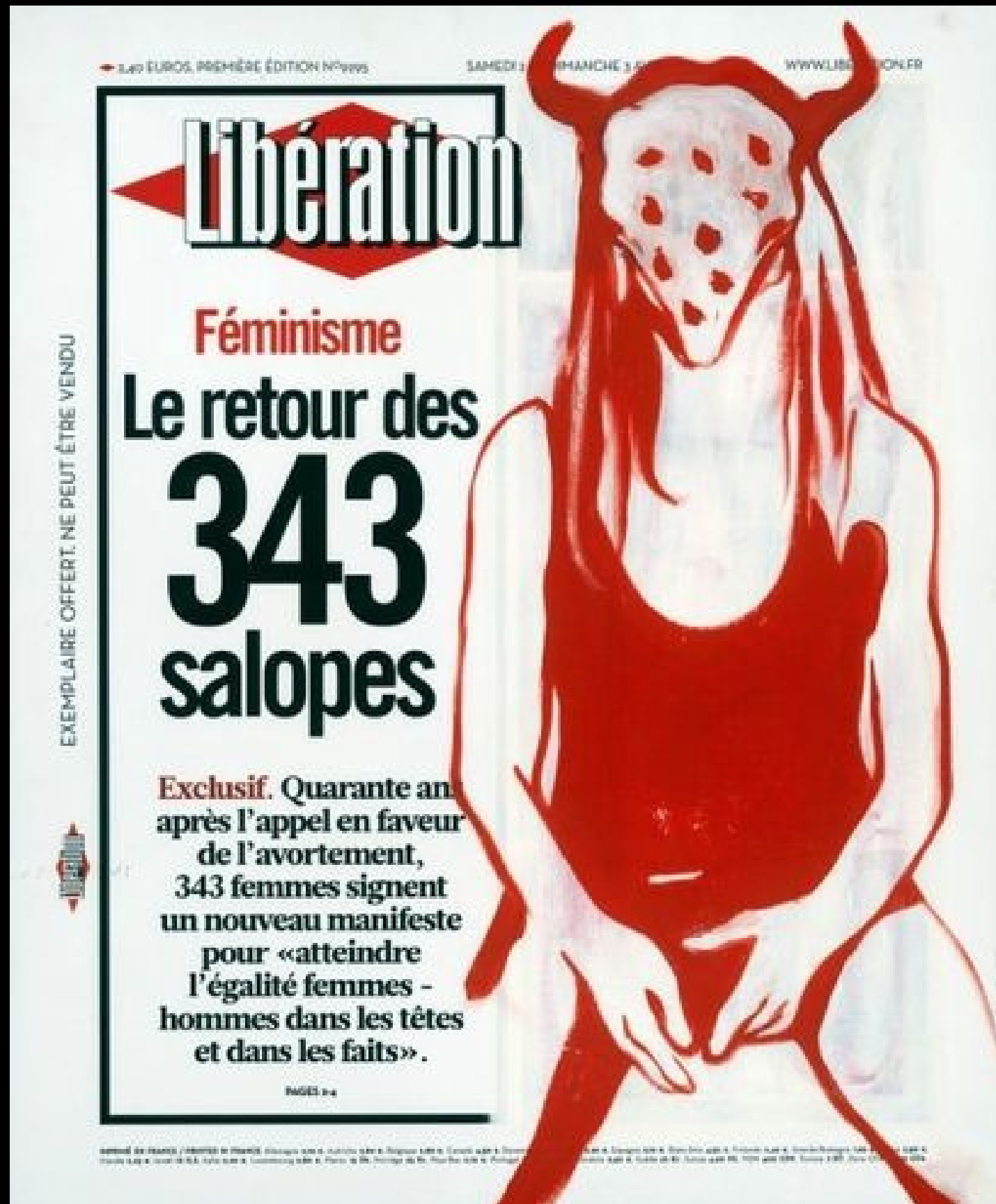
CENDRIER (2009)

MADE OF BRASS  
COMES IN TWO PARTS  
AP # 2/3

H.55 x L.19 cm x P.19 cm



TOE



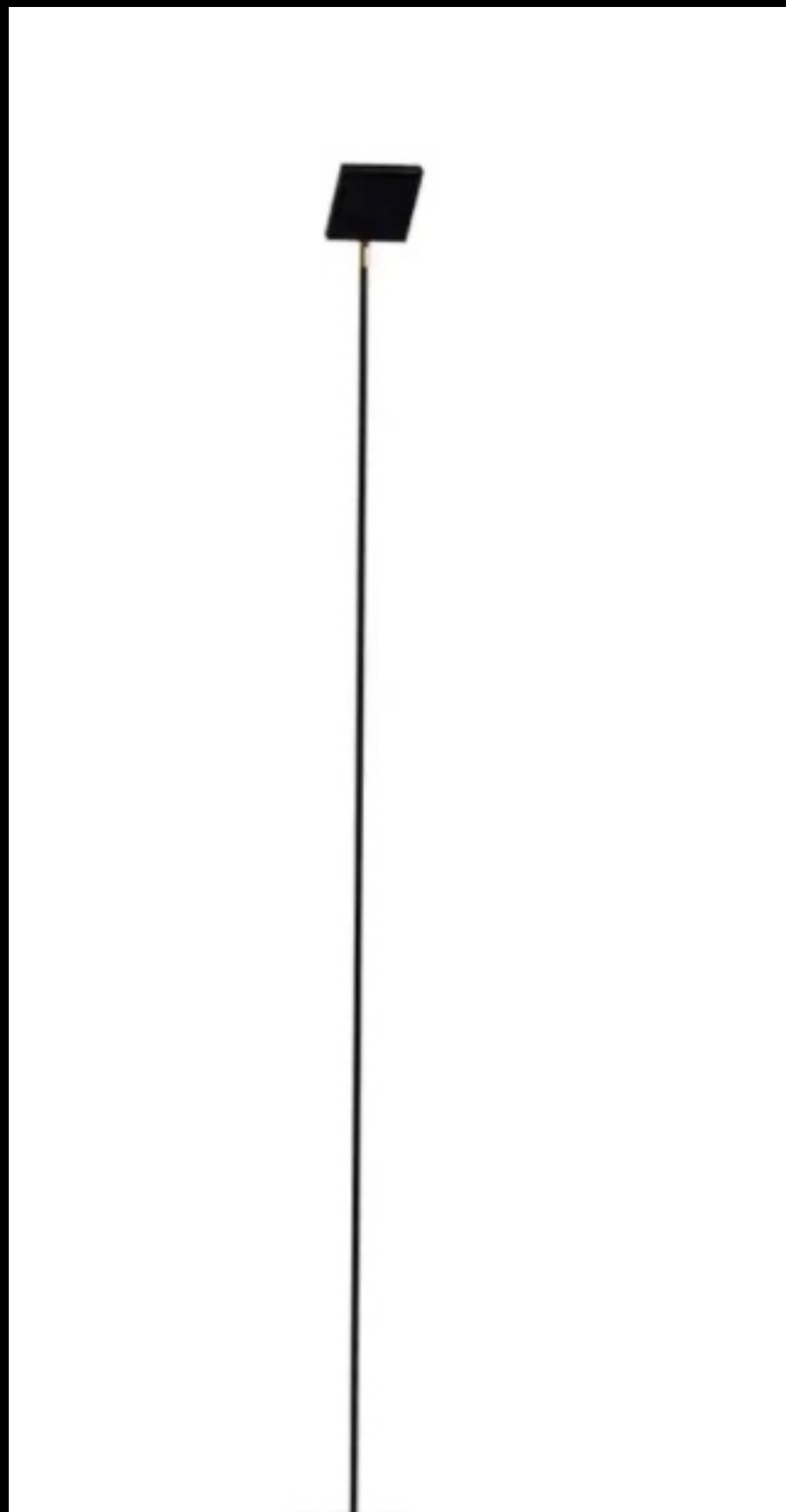
FRANÇOISE PETROVITCH

LE RETOUR DES 343 SALOPES (2015)

OIL PAINTING ON PAPER 210G

H.73 x L.60,5 cm





T O E

HALO GIGA

FLOOR LAMP INDOOR & OUTDOOR  
SUNSET LIGHT- DEEP BLUE

H. 180 x 15 x 20 cm







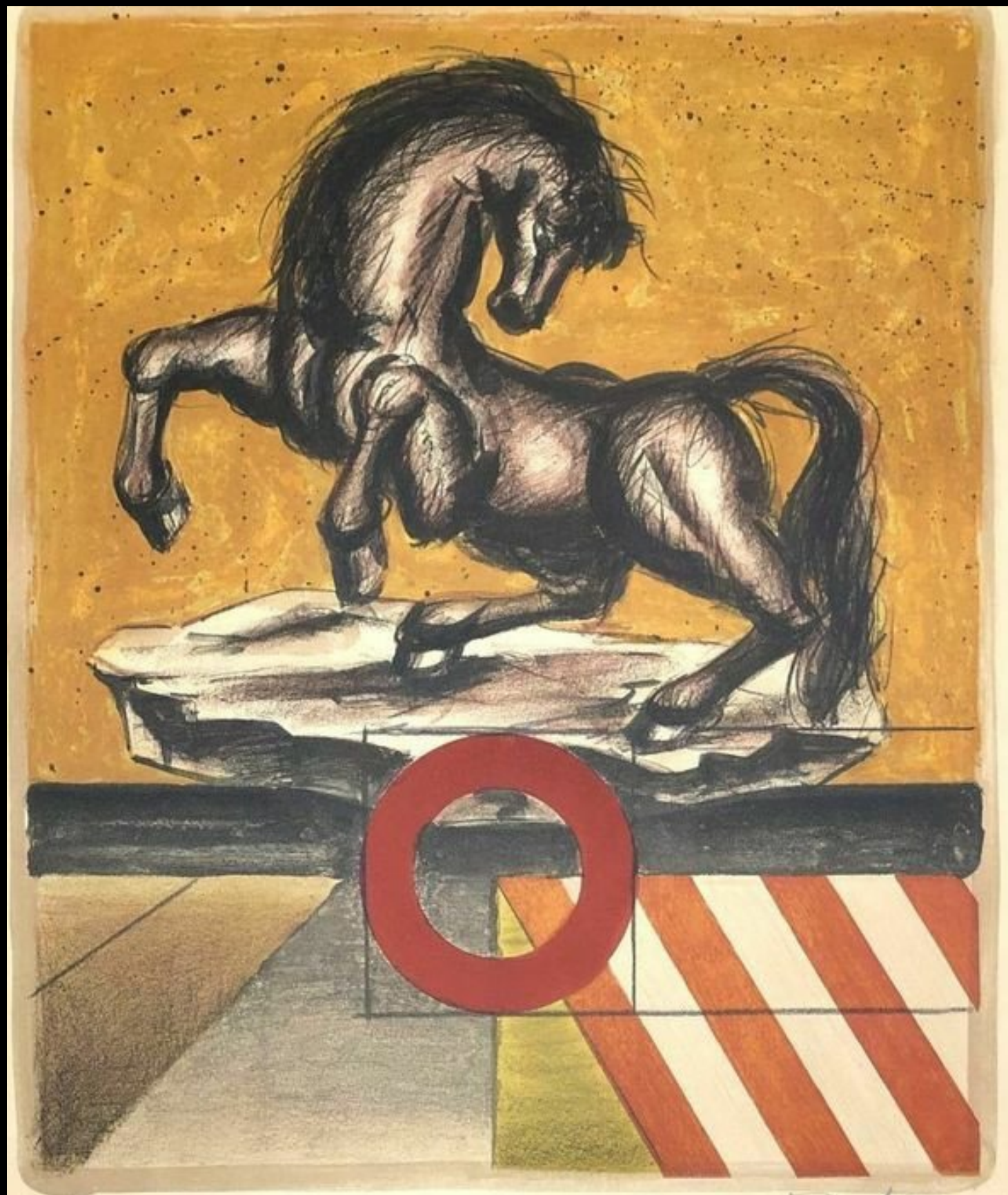
TOE

SPOUTNIK

CIRCA 1970  
STAINLESS STEEL



TOE



FRANZ PRIKING

LE CHEVAL CABRÉ (1972)

ORIGINAL LITHOGRAPH  
HAND SIGNED WITH PENCIL #10/120

H.59,5 x L.48,5 cm



TOE



OLIVIER DASSAULT

LE GÉNIE DES MAINS (2004)

LACQUERED PHOTOGRAPH

L.40 X H.26 cm





TOE

OLIVIER DASSAULT

LA PLUME DU PEINTRE

ORIGINAL SIGNED LACQUERED PANEL  
NUMBER # 5/10

H. 90 X L. 60 cm





TOE



OLIVIER DASSAULT

EBORIS ET GLYCINE

ORIGINAL SIGNED LACQUERED PANEL  
NUMBER # 5/10

H.80 X L. 64 cm



T O E



OLIVIER DASSAULT

BLACK BUILDING

ORIGINAL SIGNED LACQUERED PANEL  
NUMBER # 1/10

L.155 X H.60 cm







T O E

MICHAEL WAGNER

COUCOU V (2021)

UNIQUE PIECE  
RESIN & RESINE

H.200 x L.115 x P.78 cm





T O E

MICHAEL WAGNER

COUCOU IV (2021)

UNIQUE PIECE  
POLYESTER & RESIN

H.173 X L. 100 x P.73 cm



TOE

MICHAEL WAGNER

COUCOU SERIES

CERAMIC & ALABASTER  
EDITION OF 8 COPIES





TOE



VINCENT CUISSET

LE DIABLE DES PROFONDEURS (2021)

BRONZE EDITION OF 8 PIECES

NAUTILUS IN STEEL

SIGNED AND NUMBERED

CHIEF MODEL IN POLYURETHANE RESIN

NAUTILUS IN STEEL

UNIQUE PIECE

H.82 X L.149 X W.40cm







TOE

DAMIEN BENETEAU

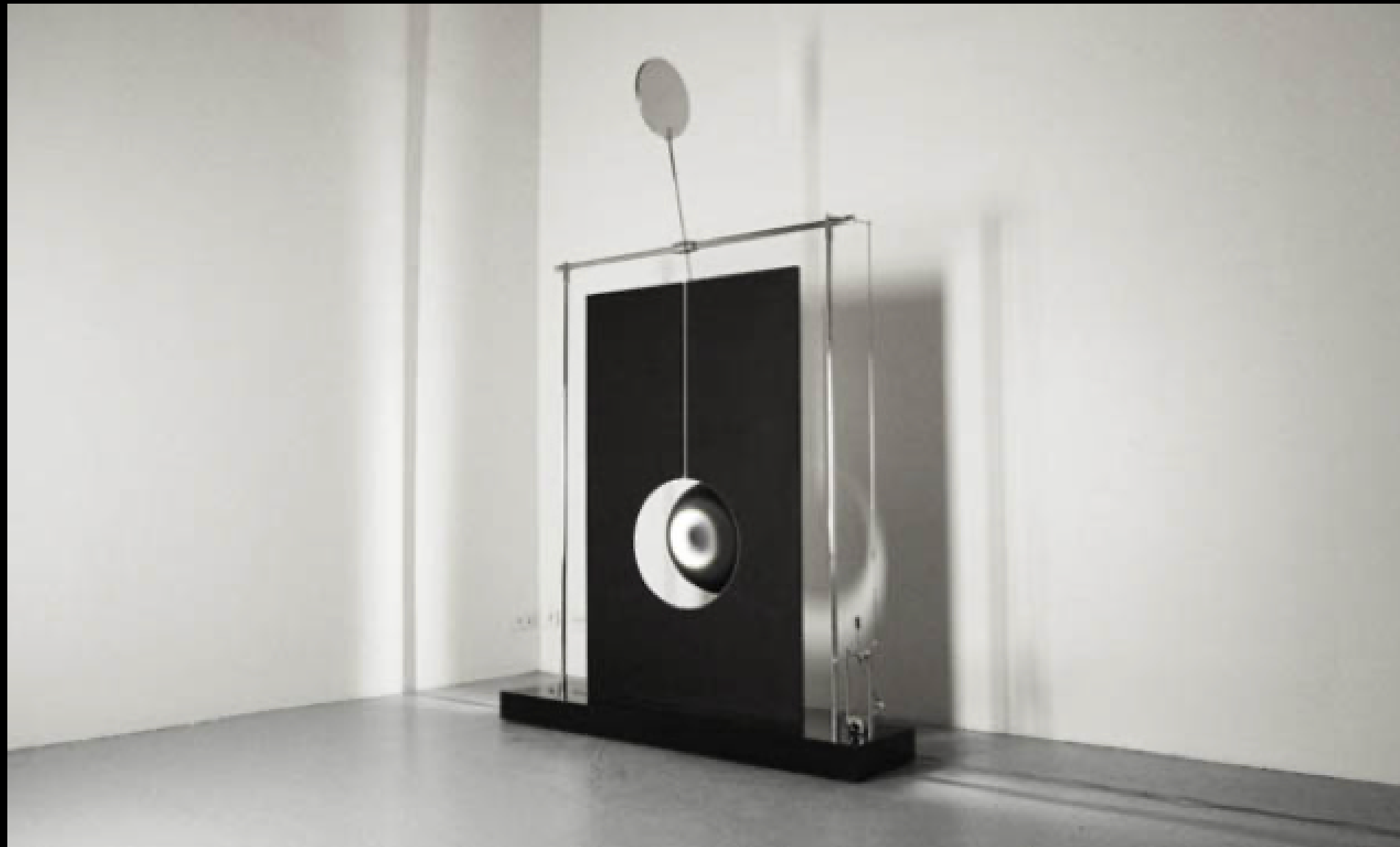
SPATIAL VARIATIONS (2021)

ANODISED ALUMINIUM, STAINLESS STEEL,  
LED LIGHT SOURCE

UNIQUE PIECE  
EDITION 1/1 WITH ONE AP

L.114 x P.35 x H.176 cm

SOLD





TOE

LUIGI COLANI

THE POOL

MODULAR SOFA (1975)  
SET OF TWENTY-FIVE MODULES  
TWO HEADRESTS  
TWO MODULES FOR THE LEGS  
IN SUEDE-COVERED FOAM

IN PERFECT CONDITION

80 x 80 cm (each)

SOLD





T O E

TOTE BAG

KOBYA PARIS

It is a real frog. An invasive species ecologists in Oceania have been hunting since 1950. KOBYA collect what the ecologists pass on to us. All of their other leathers come from recycled materials.





TOE

THE CRAFT

THE F# SURFBOARD

POLYESTER BREAD BASE WITH A CENTRAL PLYWOOD BATTEN,  
POLYESTER LAMINATION, SILVER CHROMING.

THIS IS A REAL SURFBOARD.

SIGNED MW  
EDITION OF 8







TOE



MICHAEL WAGNER

12,000 LUMEN VIDEO PROJECTION OF THE  
EARTH FROM SPACE ON A 3 METER DIAMETER  
SCREEN.

A SELECTION OF MUSIC AND SOUND EFFECTS  
ACCOMPANIED THIS EPHEMERAL  
INSTALLATION.



# THE OVERVIEW EFFECT

EXHIBITION

NOV 12-14 | 2021

TOE

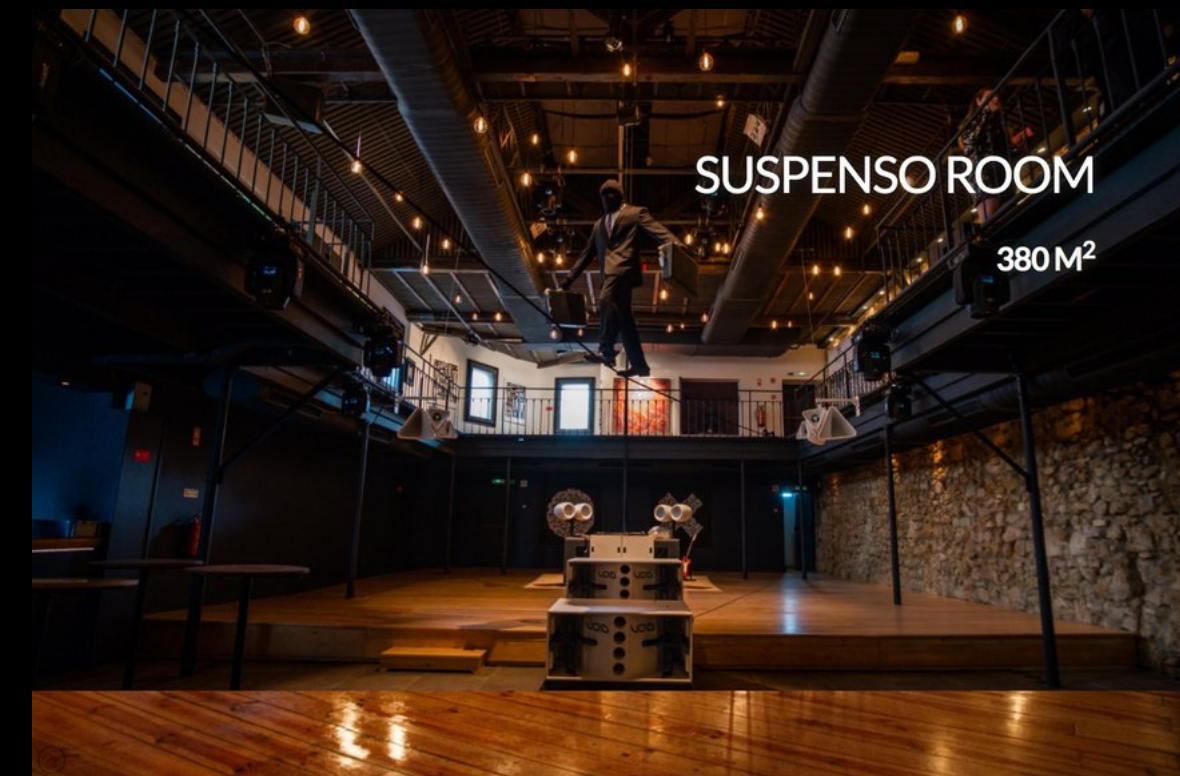
SUSPENSO

[www.suspenso.pt](http://www.suspenso.pt)

SUS  
PEN  
SO LIS  
BOA

# SUSPENSO

LISBOA



## VENUE

R. de Santiago 19  
1100-001 Lisboa

Joao Viegas  
T. +351 926 711 664  
ola@suspenso.pt

TOE



**SUSPENSO**

www.suspenso.pt

**SUS**  
**PEN**  
**SO** LIS  
BOA

TOE



THANK  
YOU



## PRODUCTION

Georges Zorgbibe | Sophie Civet Burrus | Michael Wagner | Vincent Chicha

## VENUE PLACE | SUSPENSO

[www.suspensio.pt](http://www.suspensio.pt)

Joao Viegas +351 926 711 664

[ola@suspensio.pt](mailto:ola@suspensio.pt)

CONTACTS | [info@the-overview-effect.com](mailto:info@the-overview-effect.com)

REGISTRATION | [www.the-overview-effect.com](http://www.the-overview-effect.com)

information and prices of the works presented:

[sales@the-overview-effect.com](mailto:sales@the-overview-effect.com)

Jonathan +351 915 792 332 | Georges +33 6 62 33 15 15